

A component of RES Suite®
Object Analysis Architecture



ANALYSIS OF IT ASSET
CONSISTENCY



RES®



Seteci

ARPA

ARPA is a component of the RES OA family of products which are designed to perform a detailed analysis of all software objects within your mainframe I.T. environment and their relationships to identify potential inconsistencies between the components of the mainframe software I.T. assets.

Through this process ARPA is able to intercept and highlight the anomalies that very often lead to a decline in the quality and an increase in the cost of I.T. asset management cost.

This is typically the result of issues such as the presence of obsolete objects, duplicate objects in different environments, structural discrepancies and/or the lack of various objects that are necessary for a successful execution of the software in question.

ARPA incorporates as part of the product a set of corrective tools that when coupled with standard system utilities, are able to remove the identified anomalies.

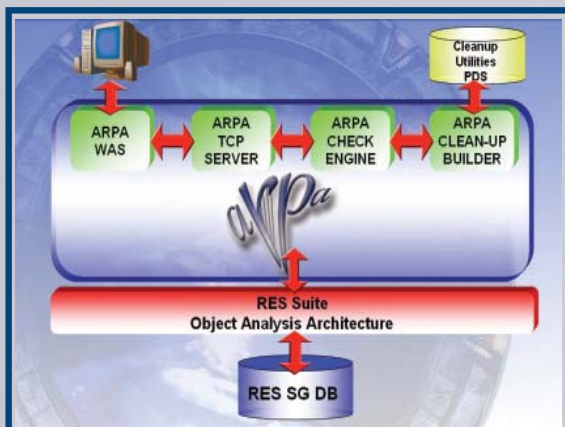
The problem

It is a known fact that over the years the number of inconsistencies between the variety of objects within a typical mainframe I.T. software environment has increased exponentially. The typical reasons for this increase have been identified as: I.T. processes that are increasingly becoming more complex, years of on-going maintenance build up within the objects, acquisition of new applications and major modifications to applications in order to comply with new business requirements.

Frequently these changes are the cause of:

- Obsolescence (from single objects like a datastore or a program, up to entire applications)

Fig. 1 - Configuration and internal architecture of ARPA.



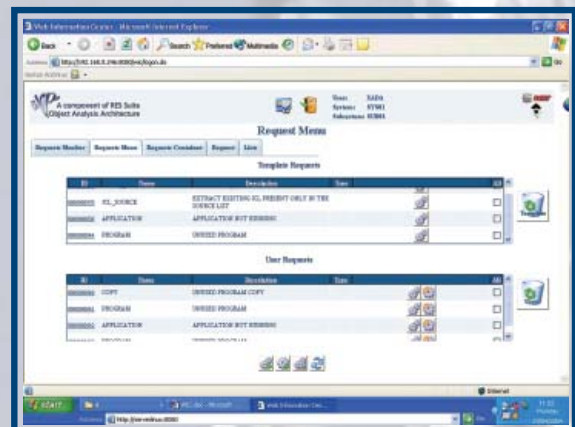
- Structural inconsistency, such as links to objects that no longer exist (e.g.: called modules)
- Displacement between environments.

Inevitably, these inconsistencies will:

- Add complexity to applications
- Waste of resources
- Drastically increase maintenance efforts
- Increase the risk of errors during execution and during maintenance activities

and, finally, a resulting increase in the cost of management of the application components within the environment.

Fig. 2 - A variety of predefined templates are available to the user which allow the creation of specific queries and generation of cleanup utility commands.





**M
a
j
o
r

F
u
n
c
t
i
o
n
a
l
i
t
i
e
s**

Through the capability of its Web Browser and by leveraging on the information collected in the RES Suite database, ARPA provides for the ability to:

- Define and store in its catalog the result of ARPA's "consistency checks", leading the user through a guided selection of objects to be checked and algorithms to be applied
- Run the ARPA consistency checks defined in the internal catalog
- Monitor the status of the checks and view the associated results
- Create the rules necessary to proceed to the removal of the identified inconsistencies.

ARPA is comprised of two main components:

- **ARPA-WEB-Server** component, that allows the user to run the products through a Web Browser
- **ARPA-TCP-Server** the mainframe component that includes all the basic services and provides access to the RES Suite SG Repository.

Thanks to the Web based interface, customers are not required to install any software on the clients of the end users, thus reducing the time to manage the product to a minimum.

The access to ARPA is managed by the standard SAF products used by the client. ARPA contains a special OEM version of DOCET/GS that allows the analysis of objects also by those clients that are not DOCET/GS users.

Prerequisites
<ul style="list-style-type: none"> o OS/390 2.10 or Z/OS 1.1 or higher o DB2 UDB or higher o One of the following Operating Systems: Unix, Linux, Linux for z/OS, Windows, Solaris, ... with JVM 1.4.1 or higher o Web Application Server J2EE compliant (Apache-Tomcat, Websphere 5.1 or higher, ...) o TCP-IP connection between the open platform and the mainframe.

All names and products mentioned in this document are registered trademarks of their respective holders.



RES-IT US

RES-IT US, Inc.
One Penn Plaza, suite 3515 - New York, NY 10119-3595
www.res-it.com - infous@res-it.com



Seteci

Via Siusi, 7 - 20127 - Milano - Italy
tel. +39.02.268141 fax. +39.02.26140875

