

DOCET

APS | ENTERprise

DOCET

The most efficient and detailed enterprise documentation and impact analysis system for your data center production assets.

DOCET is a solution that performs an analysis on all production objects within the company's Enterprise IT system, integrates this information and stores it within its own DB2 relational database. This information is then made available to data center personnel of all levels of responsibilities.

The information in the repository can be accessed using the more than 100 predefined reports. The repository can be interrogated to perform the most efficient impact analysis by using its user friendly graphical interface (WS-JCR+) which is a standard component of DOCET or standard SQL queries. Optionally the Web Information Center (WIC) can be used to run queries via the web through any standard web browser.

DOCET provides an automated method for maintaining and keeping its database constantly updated. As new object information is continually being stored in its database the user has the option of keeping the database updated by either a synchronous or asynchronous alignment. Incremental updates can be performed to production objects that have been modified.

The Problem

The constant growth of mainframe and open systems production objects (programs, data-stores and processes) within the development and testing environments, the increasing number of logical and physical connections between them and the continual growth of application complexity creates the necessity to have a complete knowledge of the IT production assets from an enterprise level. This problematic condition exists primarily because of the continuous necessity to update software and the execution processes.

Documentation of production objects belonging to the information systems also prompts continuous exchanges of information between the application development area and the production area. This type of information exchange is often incomplete and/or provided in a format that is insufficient for the recipient to properly manage these objects correctly and in an optimized way.

Development and changes to the software by outside vendors add to the problem due to the difficulty of obtaining complete and updated documentation. Under such conditions it becomes difficult to evaluate the quality and/or the adherence to standards that must be applied to the software.

Distributed environments have become even more difficult to "govern" due to the high number of objects to manage, which usually is higher than the number of objects within the mainframe environments.

Because of this, the number of connections and relationships between these objects has also risen dramatically. As a result:

- Each project/application is in a world of its own
- Job scheduling products on the various platforms do not have a centralized point of control and view of all, especially if they are heterogeneous
- It is not possible to trace relationships and interactions between "open" systems and the mainframe.

The Solution

The heart of the DOCET solution is a central repository where analysis processes gather detailed information related to all the production objects within a client information systems environment. The synchronization of information between the objects and information about the objects can be guaranteed by the interaction between DOCET and the client Change Management system.

DOCET provides processes for performing queries and analysis on z/OS, Linux, Web and Unix platforms that are designed to automatically document the different objects that exist which could be related to the test as well as the production environment and their interrelationship within the realm of the "Enterprise Application".

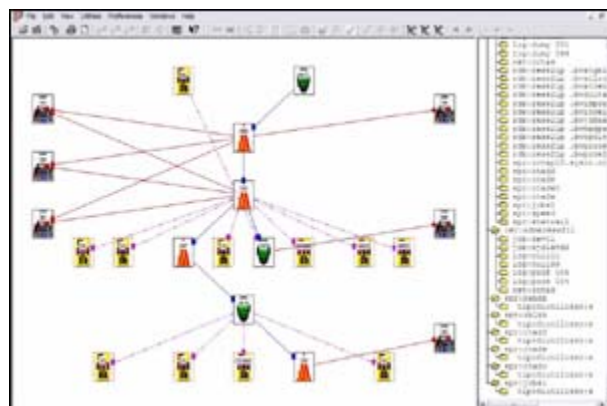
The DOCET repository can be easily interrogated. In order to be adaptable to company requirements, DOCET is made available in four versions:

DOCET/PE – provides documentation of mainframe operational component types such as Nets, JCL/Jobs, and files.

DOCET/GS – extends the capabilities of DOCET/PE, supporting all other components such as programs, copybooks, databases, report distribution systems, online transactions, and more.

DOCET/DE – is similar to DOCET/GS but is designed for handling open-system components and web applications, such as Java, XML, Shell, scripting, and scheduling information from the distributed environment.

DOCET/EA – is a complete documentation solution, integrating the above three products. It provides information on the interrelationship between production components on the mainframe and the distributed platform; for example, access to central databases, invocation of mainframe transactions and programs, exchange of files, etc.



Available loaders:

DOCET/GS:

Those of Docet/PE +
Cobol
PL/I
Easytrieve
Focus
CICS
IMS (MFS/PSB/DBD)
HPS
DB2 Catalog

DOCET/PE:

JCL (JES2 – JES3)
OPC – TWS
CA/7
CA/Scheduler
Jobtrack
ESP
Control/M
Beta/93
Control/d
SAR Express Delivery

DOCET/DE

Java (Source e Byte code)
Java Script
JSP page, HTML, XML
C++
Manifest
Properties
Net TWS e TNG
Shell e Script
Links between mainframe and open systems (ECI, Stored Procedures, JDBC, JCA, FTP, etc.).

Benefits:

- Drastic reduction of the time required to document applications and objects
- Synchronize the alignment between the documentation and objects insuring the integrity of the analysis results
- Reduction of errors caused by the lack of knowledge of the applications and their related objects
- Full understanding of the relationships and connections between objects and application components residing on heterogeneous platforms
- Analysis of the software developed or modified by external software developers (statement typology used, standards adherence, evaluation of the complexity, etc.)
- Increase in the integrity of processes
- Immediate and complete results of any impact analysis activities.

BENEFITS

APS|ENTERprise offers a free, no obligation, trial of DOCET. During your trial period you will receive full support for the implementation and trial of DOCET.

Please contact us for further information or to schedule an on or off site demonstration.

For your local APS|ENTERprise partner please visit: www.aps-enterprise.com.

APS | ENTERprise **software incorporated**

NORTH AMERICA

APS|ENTERprise software incorporated
775 Park Avenue, Suite 200/10
Huntington, NY 11743
USA

Phone: 631-784-7720
Fax: 631- 824-9361
Email: info@aps-enterprise.com
Web: www.aps-enterprise.com

APS | ENTERprise **software consulting gmbh**

OUTSIDE NORTH AMERICA **(Europe, Africa, Asia, Pacific, South America)**

APS|ENTERprise software consulting gmbh
Heinz-Nixdorf-Strasse 22
41179 Mönchengladbach
Germany

Phone: +49 2161/823777
Email: info@aps-enterprise.com
Web: www.aps-enterprise.com

