

VISUAL | output
for Control-D

APS | Enterprise

VISUAL | output for Control-D

Control-D from BMC is the premier solution for enterprise-wide report management; handling report creation to breakdown, storage, viewing, delivery, archival and deletion. The automation and integration of this enterprise-wide output is a critical business process and therefore must be consistently optimized for throughput and resource utilization.

Managers and Control-D administrators are continually faced with the following optimization challenges:

- Productively gain a better understanding of existing Control-D Trees while keeping them current
- Quickly and efficiently implement organizational changes into report distribution
- More efficiently utilize Control-D resources
- Perform security reviews and analysis's to determine user authorizations and access to their reports
- Identify how reports are actually being utilized (e.g. printed and/or viewed)
- Maintain agreed Service Level Agreements (SLAs)

In order to answer these challenges and achieve a high level of optimization it is necessary to utilize an optimization tool, in addition to the functionality provide by the base Control-D product.

VISUALoutput for Control-D is a value-added solution that supplements and enhances the existing administration and management capabilities within the Control-D environment. Its simple and efficient Windows interface provides the Control-D administrator with extended functionality to manage the Who, What, When and Where within Control-D.

The result is optimized Control-D output management, significantly reduced costs and higher quality.

Maintenance of Control-D Trees

Continual updating and reconfiguration of the Control-D Tree is required due to the dynamic nature of business processes and constant changes in the organizational structure. Without the proper tools these tasks can become a very time-consuming and manual intensive task.

VISUALoutput for Control-D provides a graphical user interface to display the Tree structure in a hierarchical flow. Displaying the Tree in this way allows for the quick identification of possible inconsistencies.

Within this graphical interface Control-D distribution structures can be changed, added, deleted, copied or moved via standard Windows form controls (e.g. drag, drop, click, etc.).

Mass Change

From within this same GUI, mass changes can be applied facilitating the fast, secure and efficient implementation of organizational changes; while eliminating time consuming and error-prone manual actions.

Information Gathering and Security Analysis

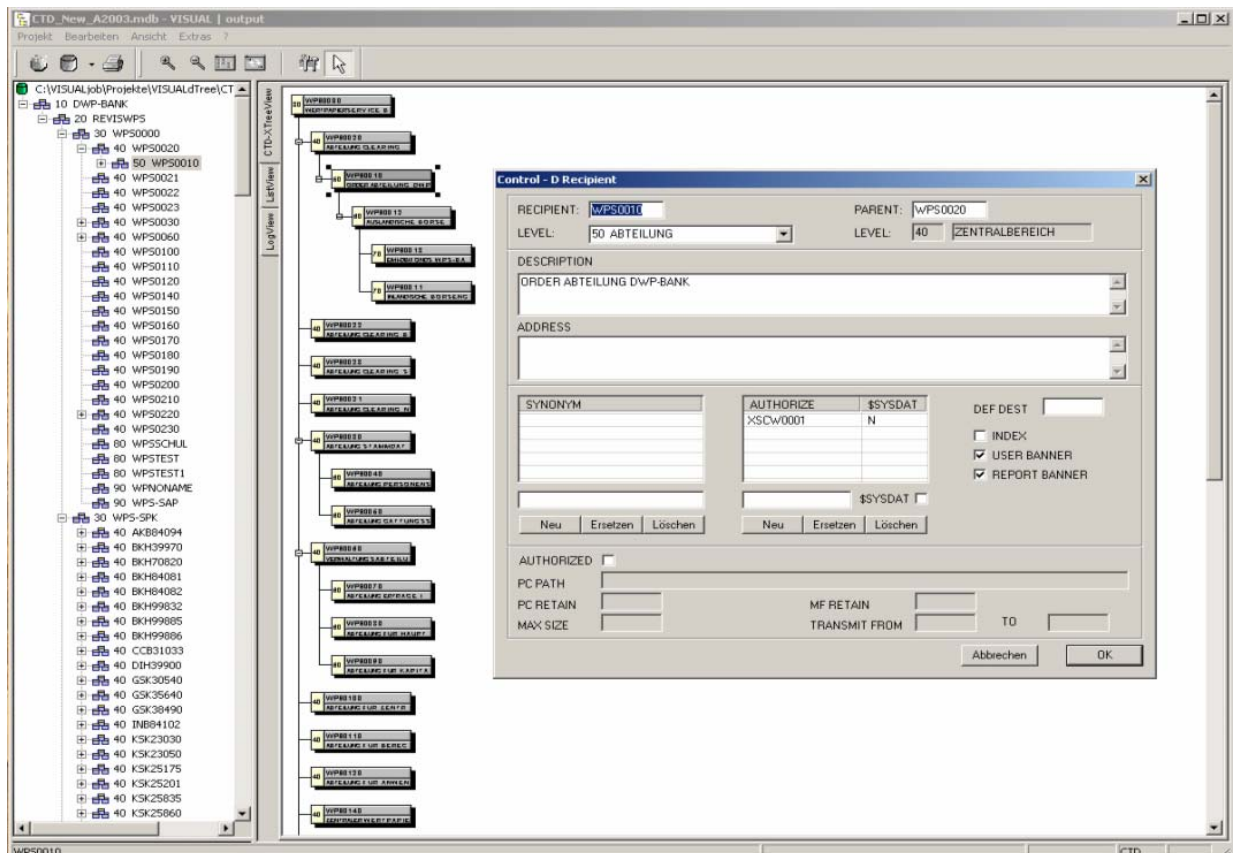
Along with the ongoing maintenance of Control-D Tree structures, the Control-D administrators must be able to answer and analyze the following:

- What reports are produced?
- Who receives these reports?
- Who has access to these reports?
- What authorization levels are assigned to users?
- Which users are assigned to which Recipients?
- Are these reports archived? If so, for how long?

In many cases these questions cannot be answered sufficiently within Control-D. Each time the required information must be gathered from multiple data sources by Control-D administrators.

The VISUALoutput for Control-D Cross-Reference facility provides one centralized source for this type of information gathering through a simple to use interface.

Complex questions relating to the security, distribution and storage of Control-D reports can now be answered in a fast and reliable way.



VISUALoutput for Control-D Tree Structure

Resource Optimization and Cost Reduction

There are high costs associated with the online storage, printing and archiving of report output. How can existing resources, utilized by Control-D, be handled more efficiently and how can cost reductions be realized without lowering service levels?

To answer this, further questions need to be posed. Typical questions in this regard are:

- Are these reports required?
- If so are they simply viewed or printed?
- Can the duration of storing and archiving these reports be change, while still meeting legal and user requirements?
- Could more economical archive media be utilized based upon viewing, restore and retention requirements?
- What are the real costs associated with the printing or viewing of reports for specific users?

The VISUALoutput for Control-D Cross-Reference facility provides the information necessary to accurately answer these questions.

Administrators and managers can now make informed decisions and take a proactive approach to optimize the utilization of Control-D resources.

The result is a better managed Control-D environment, service optimization and cost reductions.

Implementation

VISUALoutput for Control-D can be installed within minutes on a Windows server or workstation. There are no further components to install under z/OS. VISUALoutput for Control-D uses standard functions of both the base Control-D and z/OS operating systems.

PrintTime	PrintDate	SysID	UserID	JobName	Recipient	Report	Category	PageNum
00.07.28	050201		NRWPROD	P31Z088	P31ZCOL	B3183100	COLP31Z	6
00.07.28	050201		NRWPROD	P31Z088	P31ZCOL	B3183100	COLP31Z	6
00.22.19	050201		AVRACF	ADCFAVR	ADCFAVR	ADCFAVR	SEQL-M70.AD	2
00.50.49	050201		AVRACF	WFLDLGA	WFLDLGA	WFLDLGA	SEQL-M18.WP	17683
01.00.15	050223	E168		P61F209	P61FCOL	P61FGV-02	COLP61F	262
01.00.15	050201		NRWPROD	P61F209	P61FCOL	P61FGV-02	COLP61F	196
01.00.15	050201		NRWPROD	P61F909	P61FCOL	P61FGV-09	COLP61F	1
01.00.16	050223	E168		P61F909	P61FCOL	P61FGV-09	COLP61F	2
01.04.54	050223	E168		WFLDLGA	WFLDLGA	WFLDLGA	DAILY	12062
01.07.12	050201						SAZOK046	6
01.07.12	050201						SAZOK047	6
01.07.12	050201						SAZOK048	6
01.07.12	050201						SAZOK049	6
01.07.13	050201						SAZOK123	6
01.07.13	050201						SAZOK124	6
01.07.13	050201						SAZOK125	6
01.11.11	050201						SEQL-M09.DR	7
01.14.43	050201						SEQL-M70.AD	1245
01.15.49	050201						SEQL-M2SEMA	2
01.16.33	050201						SEQL-M18.AD	32
01.16.46	050201						SEQL-M15.AD	34
01.16.57	050201						SEQL-M70.AD	1017
01.17.04	050201						SEQL-M70.AD	3
01.17.09	050201						SEQL-M42.AD	2
01.17.14	050201						SEQL-M18.AD	2
01.17.23	050201						SEQL-M18.AD	2
01.17.53	050201						SEQL-M70.AD	64
01.18.07	050201						SEQL-M70.AD	61
01.18.21	050201						SEQL-M70.AD	2
01.18.41	050201						SEQL-M70.AD	9
01.18.55	050201						SEQL-M70.AD	2
01.19.06	050201						SEQL-MDB02	2
01.19.17	050201						SEQL-M70.AD	2
01.19.32	050201						SEQL-M70.AD	3
01.19.48	050201						SEQL-MDB01...	118
01.19.58	050201						SEQL-MDB02	9
01.20.12	050201						SEQL-M70.AD	5
01.27.08	050201						DAILY	1169
01.28.41	050201						DAILY	777
01.29.17	050201						DAILY	6
01.29.18	050201						DAILY	156
01.29.18	050201						DAILY	16
01.29.18	050201						DAILY	81
01.29.18	050223	E168		PDEL030	PDEL03A	PDEL030-PR...	DAILY	47
02.22.13	050201		AVRACF	ADCFSPB4	ADCFSPB4	ADCFSPB4	SEQL-MDB03	188
02.22.21	050201		AVRACF	ADCFSPS1	ADCFSPS1	ADCFSPS1	SEQL-MDB03	2
02.22.29	050201		AVRACF	ADCFSPG4	ADCFSPG4	ADCFSPG4	SEQL-MDB03	2
02.26.38	050201		AVRACF	ADCFM60J	ADCFM60J	ADCFM60J	SEQL-M60.AD	2
02.29.36	050223	E168		DRM03A	DRM03A	DRM03A	DAILY	560
02.30.06	050223	E168		ADCFAVR	ADCFAVR	ADCFAVR	DAILY	2
02.30.15	050223	E168		DRM03B	DRM03B	DRM03B	DAILY	560
02.46.27	050223	E168		ADCFGREK	ADCFGREK	ADCFGREK	DAILY	2
02.46.54	050223	E168		ADCFOS70	ADCFOS70	ADCFOS70	DAILY	86
02.47.09	050223	E168		ADCFPM4	ADCFPM4	ADCFPM4	DAILY	51
02.47.15	050223	E168		ADCFSPAN	ADCFSPAN	ADCFSPAN	DAILY	21

VISUALoutput for Control-D Cross-Reference Facility

Benefits:

- ☑ Provide a platform for a proactive approach to optimizing the Control-D environment
- ☑ Better understand the Control-D Tree structure
- ☑ Perform fast and secure mass changes to the Control-D distribution structure
- ☑ Perform security analysis's through a GUI
- ☑ Centralizes information gathering for resource optimization
- ☑ Easy and rapid implementation

Return on Investment:

- ☑ Cost reductions through increased level of meeting SLAs
- ☑ Administrators are more productive working through VISUALoutput
- ☑ Cost reductions through more efficient utilization of Control-D resources

APS|ENTERprise offers a free, no obligation, trial of VISUALoutput for Control-D. During your trial period you will receive full support for the installation and trial of VISUALoutput for Control-D.

Please contact us for further information or to schedule an on or off site demonstration.

For your local APS|ENTERprise partner please visit: www.aps-enterprise.com.

APS | ENTERprise **software incorporated**

NORTH AMERICA

APS|ENTERprise software incorporated
775 Park Avenue, Suite 200/10
Huntington, NY 11743
USA

Phone: 631-784-7720
Fax: 631- 824-9361
Email: info@aps-enterprise.com
Web: www.aps-enterprise.com

APS | ENTERprise **software consulting gmbh**

OUTSIDE NORTH AMERICA **(Europe, Africa, Asia, Pacific, South America)**

APS|ENTERprise software consulting gmbh
Heinz-Nixdorf-Strasse 22
41179 Mönchengladbach
Germany

Phone: +49 2161/823777
Email: info@aps-enterprise.com
Web: www.aps-enterprise.com